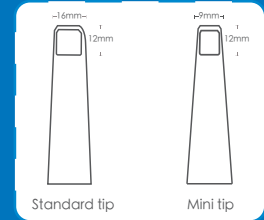


Aoralscan 3 Wireless

SCAN FOR MORE
INFORMATION



Dual-size Tips
Adult and Pediatric

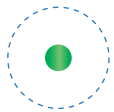


Automatic tip heating function
for fog prevention within 40s*.

*Performance may vary according to different situations.

Autoclavable (100 times)

Scan Indicator



Ergonomically Designed
for Optimal Hand-held use
Operation

Motion sensing technology
lowers the risk of cross-
contamination during
operation.

Wi-Fi 6 technology ensures fast
and stable data transmission.

LED Battery Indicator



Long-lasting
battery life

SHINING3D



dhpsupply.com
800.626.2163



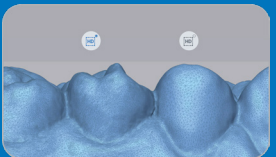
AI Scanning

Automatically identifies and filters
out miscellaneous data, resulting in a
quicker and neater scan process.



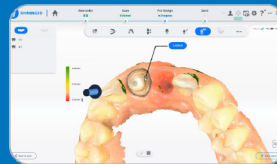
Motion Sensing

Scans with minimal contact with
computer, ensuring a safe and
efficient scan experience.



Refined Scan

Refines the restoration area to help
obtain clear margin data and more
detailed surface data.



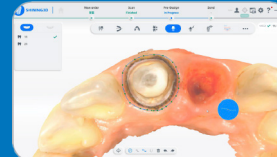
Undercut Check

During the scanning process, the
undercut value can be displayed
for easy judgement by the dentist.



Bite Check

Ensures accurate occlusal
relationship for subsequent
applications.



Margin Line Auto Extraction

Allows quick identification
of margin lines, which helps
communicate between dentist and
technician.

sales@shining3d.com

www.shining3ddental.com
(888) 597-5655

Copyright © 2014-2023 SHINING 3D. All Rights Reserved.

SHINING 3D
DENTAL

Each Aoralscan 3 Wireless scanner is equipped with 3 batteries and a charging hub.for non-stop scanning.

2

hours

2 hours of continuous scanning.

10

days

10 days under standby mode

2

min

One case scanning time: 2 min*
(Maxillary + mandibular + occlusion)
*Performance may vary according to different situation.

60

cases

1 charge can be utilized for up to 60 cases.

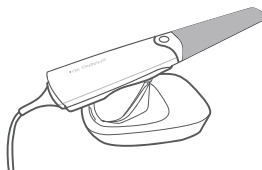
Charging Cradle

When finished scanning, you can put the Aoralscan 3 Wireless back onto the cradle to charge.



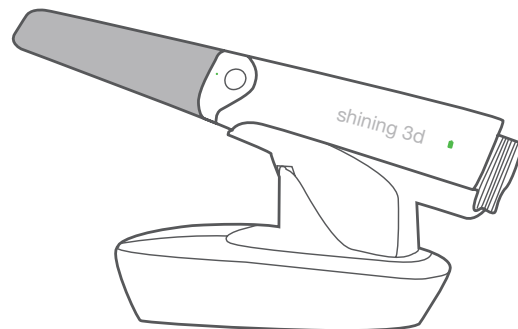
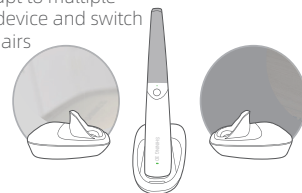
Wired Connection

Wired scan option is included as well.



Multi-cradle adaptable

The scanner can adapt to multiple cradles. Pick up the device and switch between multiple chairs



Technical Specifications Aoralscan 3 Wireless

Scan Field	Standard tip: 16 × 12 × 22 mm Small tip: 12 × 9 × 22 mm
Scan Depth	-2 mm to 20 mm from exit surface of tip
Scan Tip Sterilization	Autoclave 150 times 121°C 102.9kPa 30 min 134°C 205.8kPa 4 min
Scan Tip Heating	40s instant heating(Anti-fogging)
Scan principle	Non-contact scanner with structured light
Wireless Technology	Wi-Fi 6(802.11a/n/ac/ax)
Effective Wireless Range	Same room, up to 5m
Battery Life	2 Hours of continuous scanning. 10 days in sleep mode.
Dimension (L × W × H)	270 mm × 50 mm × 40 mm (includes battery, tip)
Weight	330 ± 20 g (includes battery, tip)
Output	STL, OBJ, PLY
Connector	USB 3.0
Power Input	12V DC/3 A

Recommended PC Configuration

CPU	Intel Core® i7-11700H / Intel Core® i7-10700F Minimum: Intel Core® i7-8700F Recommended: Intel Core® i7-11800H
RAM	Minimum: 16 GB / Recommended: 32 GB
Hard Drive	Minimum: 256 GB SSD / Recommended: 2TB SSD
Graphic Card (GPU)	NVIDIA RTX 2060 / 2070 / 3060 / 3070 / 3080
Operating System	Windows 10/11 Professional (64-bit)
Screen Resolution	1920 × 1080, 60Hz or higher
I/O Ports	More than 2 type-A USB 3.0 (or higher) ports

